

Returning User Login Instructions

1. Log in to a network computer with your network username and network password.

Your username is usually up to 7 letters of your *Last Name* plus your *First Initial*.

(If you typed your username correctly, it should automatically case-correct itself as soon as you tab to the password box)

Your password is the same as when you last used it. If forgotten, see directions to reset.



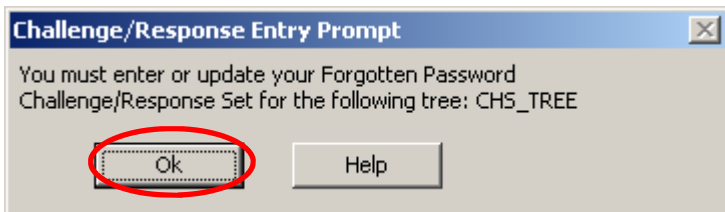
Windows XP Login Screen

(OR)

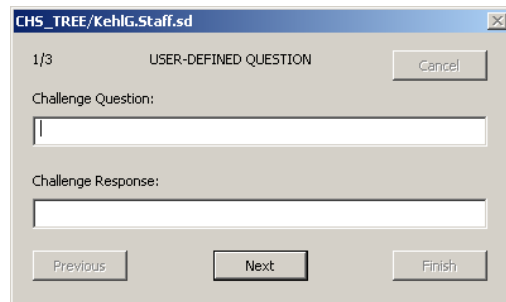


Windows 7 Login Screen

2. If prompted for it, you must click Click “OK” to the Challenge/Response prompt and follow the wizard to set your forgotten password questions. This window may be hidden behind another window—the computer will not start until you finish the wizard.



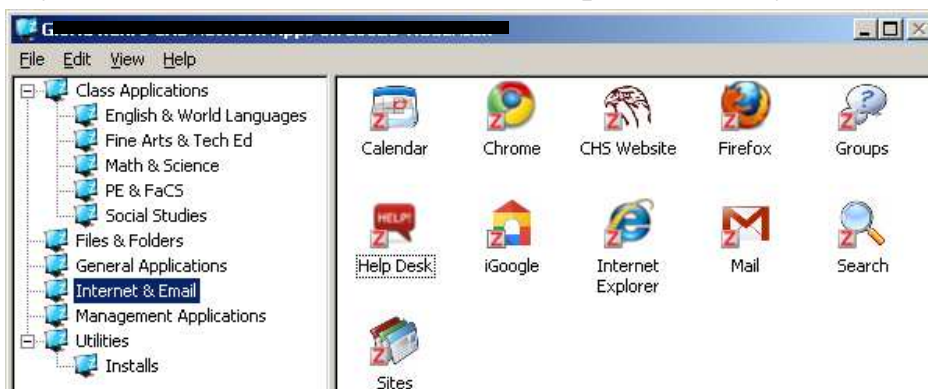
Click OK to set your forgotten password security questions



One question must be created by you

3. After the computer starts, you can run your applications from the Launcher Window.

Your initial login to CHS-Internet Wireless, Google, Infinite Campus, Help Desk, Moodle, and Destiny Library will all be the same username and password as your network logon above.



4. To access Google Apps products, look for the Google-related icons in the following locations: Internet & Email; Files & Folders; Class Applications.

5. To install printers, look for the “iPrint” icon in Utilities.