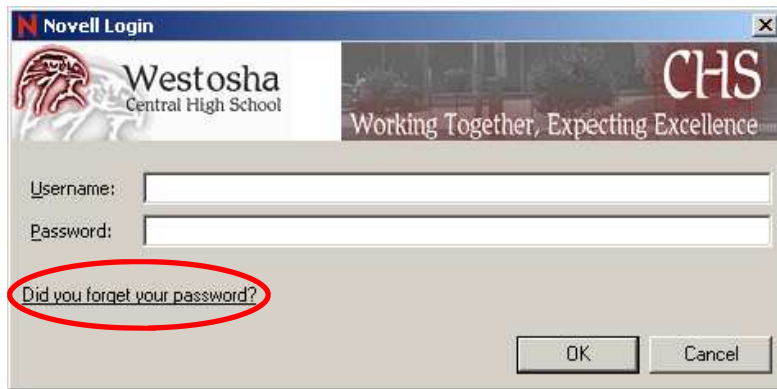


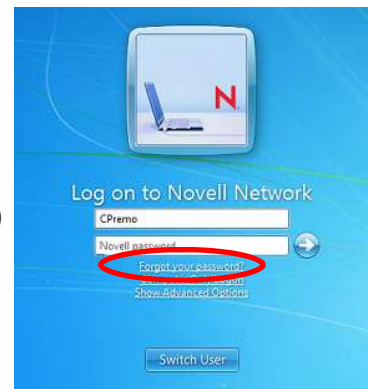
Forgotten Password Instructions

1. Enter your network username into the Username field and tab to the password box.
(If you typed your username correctly, it should automatically case-correct itself as soon as you tab to the password box)
2. Click the “*Did you forget your password?*” link underneath the password box.



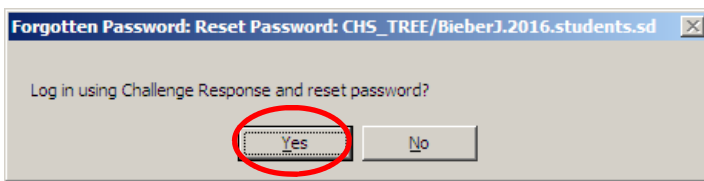
Windows XP Login Screen

(OR)



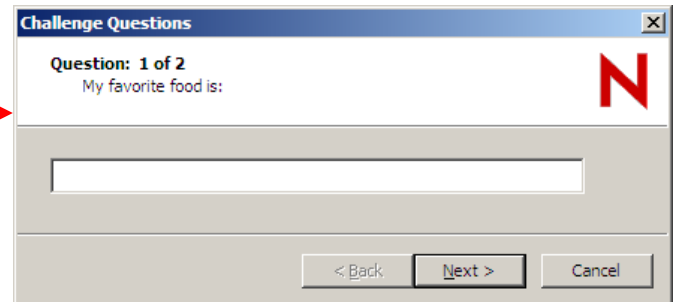
Windows 7 Login Screen

2. You will be prompted to answer your challenge response questions. Click “Yes” then follow the prompts. You will have to answer two of your three security questions.

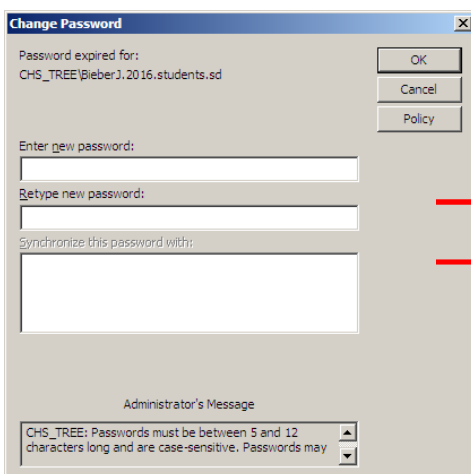


Click Yes to begin password recovery

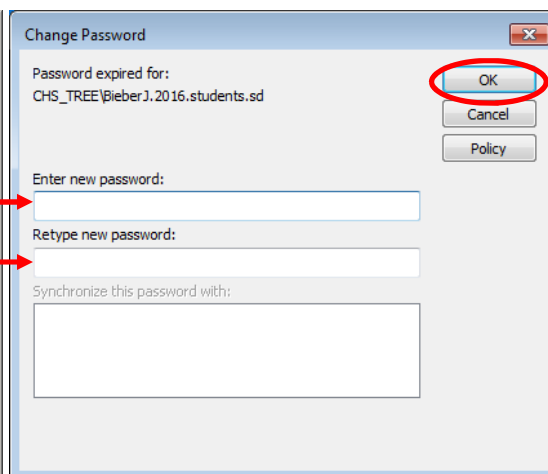
You will need to correctly answer two of three questions.



3. After the security questions are correctly answered, you can choose a new password.



Windows XP Password Reset



Windows 7 Password Reset

Please ensure your new password meets the complexity requirements.

Passwords are Case Sensitive and must be between 5 and 20 characters.

You must choose a brand-new password. You cannot re-use a password you have used before—it will not work!

4. When you change your password on the network computer, your password in the other systems, including Google, Moodle, etc, will also change. If you change your password in Google separately, it will get out of sync until you change it on the computer again.